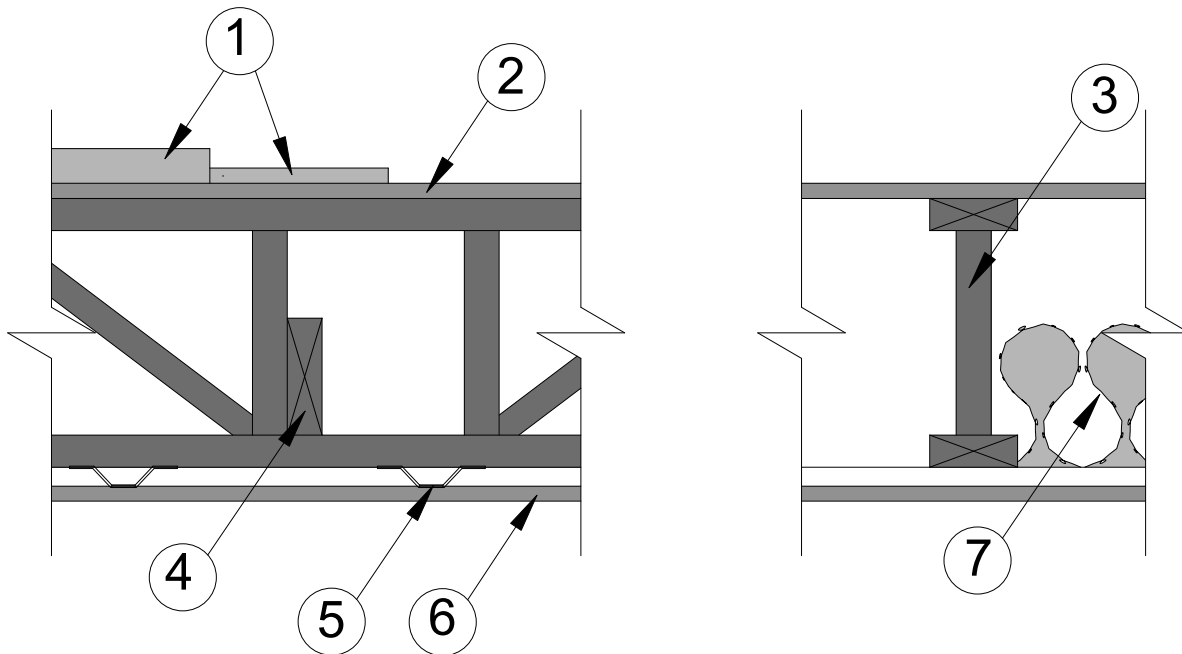


## Acoustical Performance



- 1- **Topping:** Gypcrete or equivalent and/or carpet and pad (37 oz., 7/8" carpet with woven Polypropylene backing and 40 oz. felt pad or equivalent) or vinyl flooring (Armstrong Starstep or equivalent)
- 2- **Sub flooring:** Minimum 5/8" tongue and groove plywood or oriented strandboard (OSB).
- 3- **Structural members:** Open Joist 2000®, all depths from 11 7/8" to and including 16", installed at 24" on center or less.
- 4- **Bridging:** (optional) Continuous 2x nailed to the bottom chord and the sides of the diagonals or verticals with 2" long nails.
- 5- **Resilient channel:** Galvanized steel 24 gauge spaced 16" on center and attached to the bottom chord by means of 2 Type W screws. Channels overlap on 10" at the end and are attached to each other by a 1" Type W screw.
- 6- **Gypsum board:** 1 layer of 5/8" Type X. Long edges located between joists perpendicular to the resilient channels. Short edges are staggered by 4 feet. Sheets are fastened to the resilient channels by means of 1Ω" Type S screws located 1Ω" away from the edge and 3" away from the long edges. Screws are spaced 6" on center. Joints are taped and finished with 2 layers of compound.
- 7- **Insulation:** Cellulose (5Ω" thick with 1.6 pcf density) or equivalent.

Results obtained have been performed by Inchcape Testing Services NA Ltd-Warnock Hersey and are in accordance with ASTM E-119, CAN/ULC S-101 and UL-263.